



# Sustainable & Resilient Communities



April 2026 - Western CT



🌍 Happy Earth Month! 🌍

I hope everyone has been able to find ways to enjoy and appreciate our environment as we wrap up Earth Month, whether it's been taking a hike, planting a garden, or stocking up on allergy meds to defend against all of that abundant pollen. The work you all do to make our communities better, more resilient places to live continues to inspire me, and I'm excited to see how your initiatives are doing, so don't hesitate to reach out with any project updates or needs!

Thanks to all who attended our Funding Workshop in March (pictured above). If you missed it, or are looking for a refresher, [check out this write up](#), then head over to the Resource Hub to access the slides, Funding Fact Sheet, and Funding Calendar from the event: [3rd Annual SRC Funding Workshop – Connecticut](#).

One small request - Connecticut Sea Grant is updating its Strategic Plan. You can help by taking this short [survey](#)! In exchange for less than 10 minutes of

your time, we promise not to bug you about it again for approximately four years. 😊 See below for more details.

~Deb

Having trouble viewing the images? You can now view these emails on the web:  
[View as Webpage](#)

## Assistance Opportunities

Browse and filter funding opportunities through our [Funding Database](#) on the [LIS Resilience Resource Hub!](#)

Visit our [Assistance Programs](#) page and use our handy flow chart to determine which SRC Assistance Program may be right for you!



## Funding Opportunities

🕒 DUE SOON 🕒

### Climate-Smart Forest Stewardship Grant Program

CLCC's Climate-Smart Forest Stewardship Grant Program is a new initiative that enables land trusts to take care of their forests. To help land trusts face these challenges, CLCC will provide funding for land trusts that integrate climate mitigation, resilience, and adaptation strategies into their long-term forest stewardship.

**Applications Due: April 30, 2026**

### [Connecticut Wetland In-Lieu Fee Program Grant](#)

The National Audubon Society, Inc., through its state office, Audubon Connecticut, is the “sponsor” of Connecticut’s ILF program. The program allows permittees to pay a fee in lieu of taking on mitigation themselves. Instead, local organizations like land trusts, and other environmental nonprofits, are given the opportunity to apply for and receive grant funding for the preservation, restoration, and enhancement of wetland and watercourse resources and associated upland buffers in the State of Connecticut.

**Letters of Intent Due: May 8, 2026**

### [Long Island Sound Futures Fund](#)

Up to \$12M available

Grant range: \$50k - \$2M

The Long Island Sound Futures Fund supports projects to fully restore the health and living resources of Long Island Sound. The program is managed by NFWF in collaboration with the EPA and the Long Island Sound Partnership. NFWF is providing opportunities for applicants to get consultation on their proposals (called Proposal Labs). For those in the upper watershed, there are additional workshops as well offered by Throwe Environmental.

Applications Due: May 19, 2026

**Proposal Labs: March 3 - April 30, 2026 | [Register](#)**

### [CTDOT State Local Bridge Program](#)

As part of the State’s Infrastructure Renewal Program, the Connecticut Department of Transportation’s the Local Bridge Program provides for State grants to municipalities for the removal, replacement, reconstruction, or rehabilitation of local bridges.

**Application Deadline: May 31, 2026**

## OPEN OPPORTUNITIES

### [FY26 Port Infrastructure Development Program \(PIDP\)](#)

PIDP grants support efforts by ports and industry stakeholders to improve port and related freight infrastructure to meet the nation’s freight transportation needs and ensure our port infrastructure can meet anticipated growth in freight volumes. Eligible project types include "Resiliency in response to environmental factors."

**Application Deadline: June 1, 2026**

### [Community Investment Fund \(CIF\) 2030](#)

Round 9 of CT DECD's CIF will foster economic development in historically underserved communities across Connecticut. Grants are available for Capital improvement programs and for planning for capital projects.

**Application Deadline: June 5, 2026**

### [FY24 & FY25 Building Resilient Infrastructure and Communities Grants \(BRIC\) - Connecticut](#)

CT DEMHS is pleased to announce that the application period is now open for the FY 2024/2025 BRIC grant program under the FEMA Hazard Mitigation Assistance Program. This grant program makes federal funds available for natural hazard risk mitigation activities that promote resilience.

**Application Deadline: July 1, 2026**

### [Forever Connecticut Fund](#)

CLCC's Forever Connecticut Fund is a conservation finance tool that provides land trusts with access to immediate, flexible capital to acquire natural and working lands, including fee simple and conservation easements.

**Application Deadline: Rolling (by invitation only)**



### [Urban Forest Resilience Grant Program](#)

With support from the USDA Forest Service, CT DEEP's Urban and Community Forestry (UCF) Program is offering funding to help municipalities restore their urban and community forests that are facing significant stress from invasive pests and diseases, including beech leaf disease, spongy moth, and emerald ash borer.

**RFP Anticipated: May/June 2026**

### [Resilient Forestry Practices Grant](#)

Municipally-owned woodlands face growing threats to their health from pests, diseases, invasive species, extreme weather events, and other stressors. With support from the Inflation Reduction Act, CT DEEP's Urban and Community Forestry (UCF) Program has \$1 million available to help rural communities in Connecticut implement [resilient forestry practices](#).

**RFP Anticipated: June 15, 2026**

---

## Upcoming Events

## EVENTS CALENDAR

---

### [Naugatuck Valley Region: Urban & Community Forestry Peer Learning Exchange](#)

This event, supported by The Nature Conservancy, NVCOG, and partners, will be an interactive opportunity to advance urban and community forestry initiatives for the health and well-being of Connecticut residents.

[Register](#) | **Wednesday, May 6, 2026 | 9:00am-1:00pm**

**Location:** 96 Bank St, Waterbury

### [Map Reading & Mapping Resources for Land Use Commissioners](#)

Learn fundamentals of reading a site plan & accessing site mapping data on [CT ECO](#). Earn 3 possible training hours toward mandated training requirements.

Attendance may be in-person or virtual.

[Register](#) | **Saturday, May 16, 2026 | 9:00am-12:30pm**

**Location:** UConn Middlesex County Extension Center

### [Long Island Sound Research Conference](#)

The Long Island Sound Research Conference convenes researchers and partners working in the Sound and its watershed to share science, connect across disciplines, and support collaborative solutions. Held biennially and rotating between Connecticut and New York, the conference highlights research aligned with the four goals of the Long Island Sound Comprehensive Conservation and Management Plan (CCMP). This year's conference will be a two-day event.

[Register](#) | **June 4-5, 2026**

**Location:** Mystic Hilton Hotel, Mystic

**Registration deadline:** May 19

### [CT Green Bank/SCRCOG Workshop: Resiliency](#)

The Green Bank offers financing options for areas of environmental infrastructure related to climate adaptation and resiliency. Join this workshop to learn more about these programs.

[Register](#) | **Wednesday, July 15, 2026 | 11:00am-12:00pm**

**Location:** Virtual

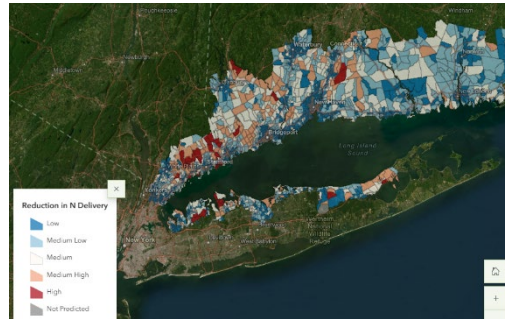
---

## Featured Resources

---

## [Long Island Sound Lawn Fertilizer Outreach Targeting Tool](#)

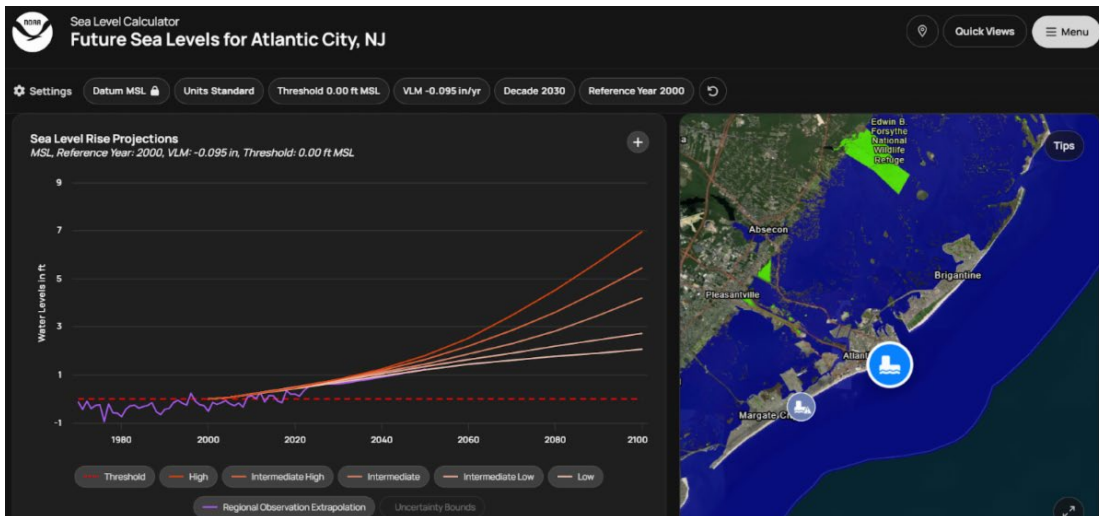
Not to gush too much about it, but this [Story Map](#) and the associated [Lawn Fertilizer Outreach Targeting Tool](#) is a truly elegant meeting of social science, GIS, and caring for Long Island Sound. It was developed by an interdisciplinary team of researchers from Clark



University, UConn, U Maryland, and U Miami to help identify areas of the watershed where interventions to reduce lawn fertilizer are expected to have greater impacts. If nothing else, the map is probably also handy for targeting friends with big lawns who should host a great Memorial Day BBQ.

## [Updated NOAA Sea Level Calculator](#)

NOAA's [Sea Level Calculator](#) tool has undergone [significant updates](#). Through user feedback, new features have been added including new tool tips, a user help portal, additional learning resources, the ability to download data for a specific quick view, and a more mobile-friendly design.



# Resilience Roles

## [WestCOG Program/Project Manager](#)

WestCOG is looking to hire planners and/or program managers to work on a range of topics (spread over two staff members). Building Energy Management,

Flood Resiliency, Stormwater, Emergency Management, Waste Management, Program Operations.

**Closing Date: Open until filled**

---

## Sound Shares

---

### **CT Sea Grant Strategic Planning Survey**

In case you missed this announcement up top, CTSG is undergoing its Strategic Planning for the grant cycle that starts in 2028, and **we would like to hear from you!** Please help us identify priorities that are important to you and that Sea Grant should consider addressing by filling a short **survey**. It shouldn't take more than 5-10 minutes and is both computer and mobile phone friendly. One of our goals is to hear from people and organizations Sea Grant doesn't currently work with, so we can hear a broad diversity of opinions; please consider sharing among your networks. Thanks in advance.



---

[View as Webpage](#)

Newsletters Archive  
& Sign Ups

[Find past newsletters here.](#)

[Sign Up for the Western CT SRC  
Newsletter!](#)

[Sign Up for the Eastern CT SRC  
Newsletter!](#)

---

**Deb Visco Abibou, PhD**  
*Extension Professional*  
*Sustainable & Resilient Communities*  
*Western CT*  
Connecticut Sea Grant  
[deb.abibou@uconn.edu](mailto:deb.abibou@uconn.edu)

Long Island Sound Partnership  
Sustainable & Resilient Communities